

Cable Tray System: Al Fareed Cable Tray Systems are engineered and manufactured in compliance with SASO, IEC 61537, and NEMA VE-1 standards, ensuring superior strength and durability. Made from high-quality steel sheets and finished with HDG coating (BS EN 1461/ASTM A123), they deliver long-lasting performance in all project environments.

Width : 50mm to 1200mm

Height : 50 , 60, 75, 100, 150, 200 mm

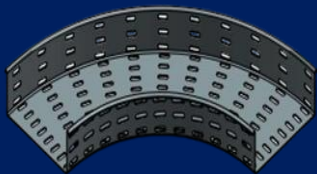
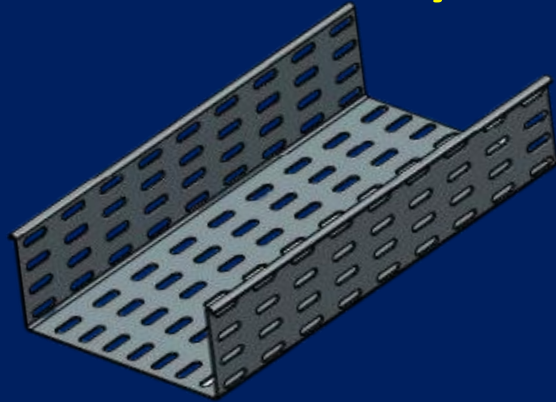
Thickness : 0.7 , 1.0 , 1.2, 1.5 , 2.0 mm

Length : 2.44 Mtr, 3.0 Mtr

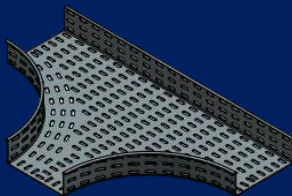
Finish : Hot Dipped Galvanized
Mill Galvanized
Aluminum
Stainless Steel
Powder Coated

Design Standard: IEC 61537, NEMA VE-1

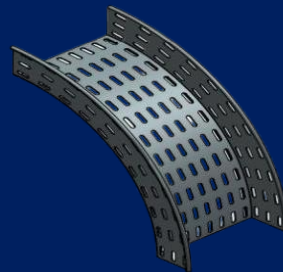
Cable Tray



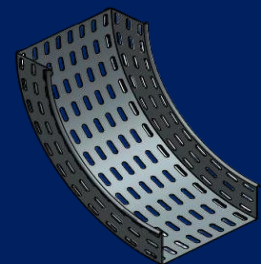
HORIZONTAL ELBOW



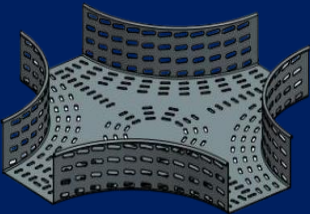
HORIZONTAL TEE



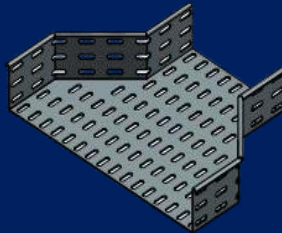
OUTSIDE RISER



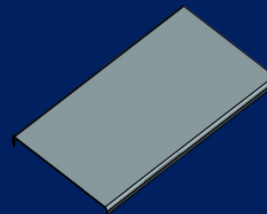
INSIDE RISER



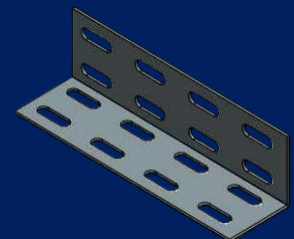
HORIZONTAL CROSS



REDUCER



COVER



CONNECTOR